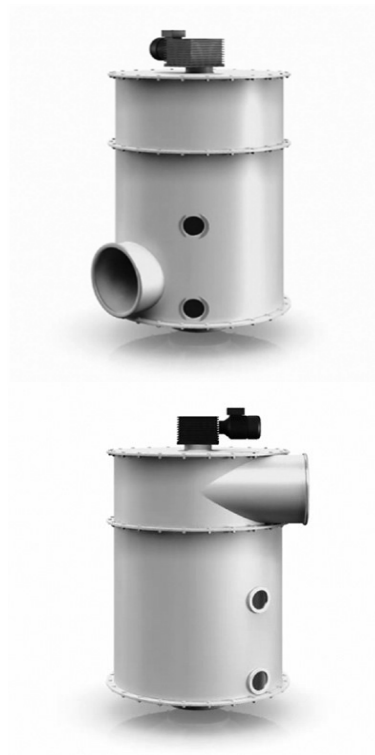


Fiber Compactor Type FKA/FKC

Separating and compacting units for textile-, paper- and plastic waste



Functional Description

The particle-laden air stream enters at the top of the housing through the tangential inlet, flows through the perforated cone and is discharged through the outlet. The collected material and waste is deposited on the inside of the perforated cone. From there the material is continuously scraped off and compacted by a plug screw.

The pre-compacted material is pressed against a diaphragm at the bottom outlet opening. This continuous process compacts the material and pushes the diaphragm open. The material is discharged into a suitable container or bag. This continuous operation of the units prevents fluctuations in the extraction system.

Fiber Compactor

The separating and compacting units of type FKA/FKC are perfectly suitable for paper residue, edge strips, foil shreds and different shredded plastics. The solid particles are extracted from the production process by suction, separated from the air stream and deposited in bags, containers or silos.

Application in various industrial sectors

- Textile industry
- Non-woven industry
- Paper industry
- Tobacco industry
- Plastic waste industry

Advantages

- Separator and compactor in one unit
- Continuous operation
- High material and air flow capacity
- Sturdy construction
- Pressure-free discharge
- No fluctuations in the extraction system
- Energy-efficient through optimum time-relay control

bg filtration gmbh

Voithstr. 5
71272 Renningen, Deutschland
Fon +49 7159 8069-0
Fax +49 7159 7933
Info@bg-filtration.de

Kreissparkasse Böblingen
BLZ 603 501 30
Kto 118174
BIC BKKRDE66
IBAN DE66 6035 0130 0000 118174

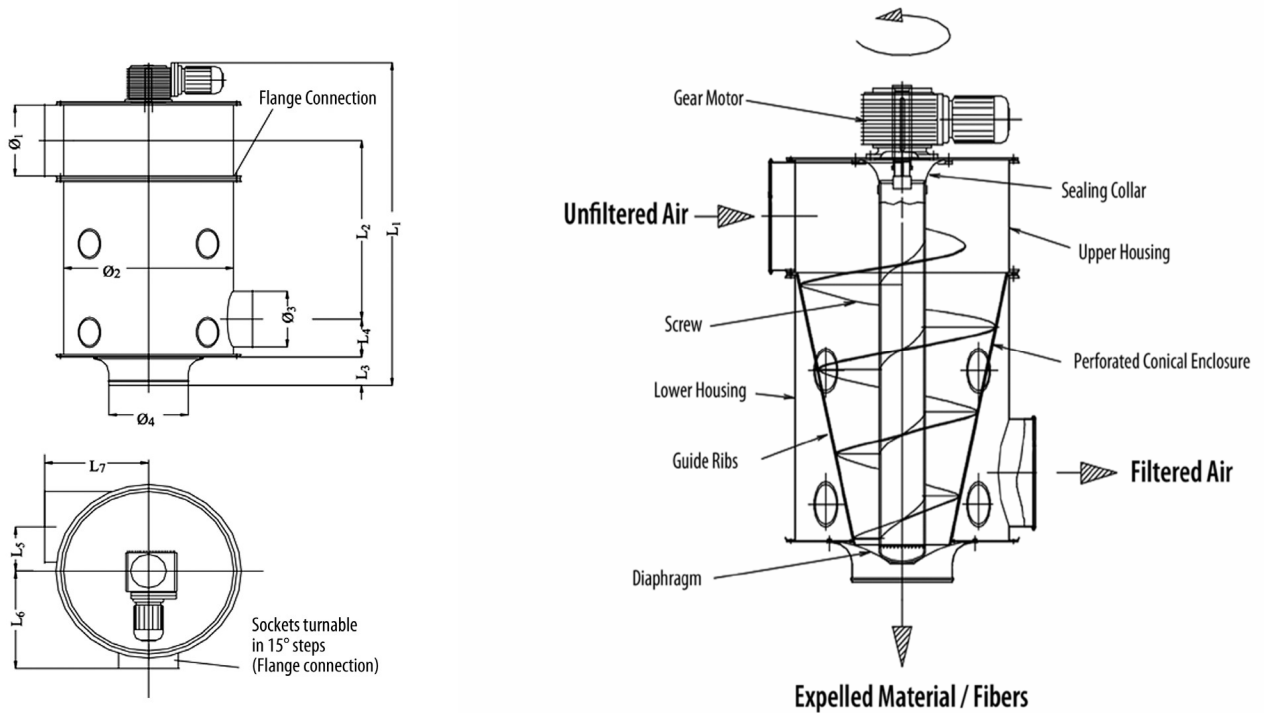
HRB 744965
Amtsgericht Stuttgart
Geschäftsführer
Dr. Volker Bauer

Fiber Compactor Type FKA/FKC

Separating and compacting units for
textile-, paper- and plastic waste

Type	Max. Material Capacity kg/h (lb/h)	Max. Flow Rate V m ³ /h (cft./min)	Motor kW	Dimensions length x width x height mm (inch)
Fiber Compactor FKC	max. 200 (max. 440.9)	1,600 - 5,000 (941.7 – 2,942.9)	0.55	620 x 620 x 1,215 (24.4" x 24.4" x 47.8")
Fiber Compactor FKA	max. 500 (max. 1,102.3)	3,000 – 10,000 (1,765.7 – 5,885.8)	1.1	982 x 982 x 1,858 (38.7" x 38.7" x 73.2")

Function Diagram



Technical Data	FKA	FKC
L1 [mm] (inch)	1,858	1,215
L2 [mm] (inch)	962	633
L3 [mm] (inch)	152	85
L4 [mm] (inch)	256	187
L5 [mm] (inch)	250	200
L6 [mm] (inch)	550	300
L7 [mm] (inch)	550	550
Ø 1 [mm] (inch)	400	280
Ø 2 [mm] (inch)	900	454
Ø 3 [mm] (inch)	400	280
Ø 4 [mm] (inch)	420	420
Weight [kg] (lb.)	355	140

bg filtration gmbh

Voithstr. 5
71272 Renningen, Deutschland
Fon +49 7159 8069-0
Fax +49 7159 7933
Info@bg-filtration.de

Kreissparkasse Böblingen
BLZ 603 501 30
Kto 118174
BIC BKRDE66
IBAN DE66 6035 0130 0000 118174

HRB 744965
Amtsgericht Stuttgart
Geschäftsführer
Dr. Volker Bauer